

Active

This profile is actively maintained
Send [feedback](#) on this profile

Created before Nov 2016
Last update: 2024-12-17 11:58:27

Website <https://www.nab.com.au/>
800 Bourke St W, Docklands Victoria
Headquarters 3008 Melbourne
Australia
CEO/chair [Ross McEwan](#)
Group CEO and Managing Director
Supervisor [Reserve Bank of Australia](#)
listed on Australian Securities Exchange
Ownership
National Australia Bank's shareholder structure can [be accessed here](#).

The National Australia Bank Group is one of the four biggest banks in Australia. It was founded in 1982 as the National Commercial Banking Corporation of Australia Limited. The Group is structured around regional banking and wealth management operations, active in international capital markets and institutional banking business. Its subsidiaries include [MLC](#) and [Bank of New Zealand](#). In 2016 it divested its UK subsidiary Clydesdale and Yorkshire Banking Group, following the 2015 sale of its US subsidiary Great Western Bank, as part of a process of refocusing on its core markets of Australia and New Zealand.

Sustainability

National Australia Bank (NAB) has committed itself to the following voluntary standards:

[Carbon Disclosure Project](#)Tags: [carbon](#) | [climate change](#) | [greenhouse gas emissions](#)
[Collective Commitment to Climate Action \(CCCA\)](#)Tags: [climate change](#) | [corporate social responsibility](#) | [United Nations](#)
[Equator Principles](#)Tags: [Equator Principles](#) | [project finance](#) | [corporate social responsibility](#) | [sustainable development](#)
[Global Reporting Initiative](#)Tags: [sustainable development](#) | [human rights](#)
[Natural Capital Declaration](#)Tags: [sustainable development](#) | [finance](#) | [natural resources](#) | [corporate social responsibility](#)
[Principles for Responsible Banking \(PRB\)](#)Tags: [climate change](#) | [corporate social responsibility](#) | [finance](#) | [sustainable development](#) | [United Nations](#) | [Voluntary Standards](#)
[Task Force on Climate-related Financial Disclosures \(TCFD\)](#)Tags: [corporate social responsibility](#) | [finance](#)
[Taskforce on Nature-related Financial Disclosures \(TNFD\)](#)Tags: [corporate social responsibility](#) | [finance](#)
[UNEP Finance Initiative](#)Tags: [United Nations](#) | [sustainable development](#)
[United Nations Global Compact](#)Tags: [United Nations](#) | [human rights](#)
[2024-10-07 00:00:00](#)

[Risk policy settings for fossil fuels](#)

[Bank policy](#)
[2024-10-07 00:00:00](#) | [National Bank of Australia](#)
[2024-10-07 00:00:00](#)

[Code of Conduct](#)

[Bank policy](#)
[2024-10-07 00:00:00](#) | [National Australia Bank](#)
[2024-08-31 00:00:00](#)

[Human Rights Policy](#)

[Bank policy](#)
[2024-08-31 00:00:00](#) | [NAB](#)
[2023-11-06 00:00:00](#)

[Modern Slavery and Human Trafficking Statement](#)

[Bank policy](#)
[2023-11-06 00:00:00](#) | [National Australia Bank](#)
[2023-08-31 00:00:00](#)

[Sustainability Policy](#)

[Bank policy](#)
[2023-08-31 00:00:00](#) | [NAB](#)
[2022-06-30 00:00:00](#)

Environmental management policy

[Bank policy](#)

[2022-06-30 00:00:00 | NAB](#)

[2021-10-20 00:00:00](#)

Update of financing of new coal mining projects

[Bank policy](#)

[2021-10-20 00:00:00 | NAB](#)

[2021-02-25 00:00:00](#)

Climate change commitments

[Date listed represents date as accessed on website](#)

[Bank policy](#)

[2021-02-25 00:00:00 | NAB](#)

[2021-02-25 00:00:00](#)

ESG Risk Management

[Date listed represents date as accessed on website](#)

[Bank policy](#)

[2021-02-25 00:00:00 | NAB](#)

[2020-11-10 00:00:00](#)

Corporate Governance Statement 2020

[Bank policy](#)

[2020-11-10 00:00:00 | NAB](#)

[2020-01-13 00:00:00](#)

Animal welfare principles

[Bank policy](#)

[2020-01-13 00:00:00 | NAB](#)

[2018-04-24 00:00:00](#)

Code of conduct

[Bank policy](#)

[2018-04-24 00:00:00 | National Australia Bank](#)

[2017-12-31 00:00:00](#)

ESG risk principles

[Bank policy](#)

[2017-12-31 00:00:00 | National Australia Bank](#)

[2017-12-31 00:00:00](#)

Supplier sustainability principles

[Bank policy](#)

[2017-12-31 00:00:00 | National Australia Bank](#)

[2016-12-30 00:00:00](#)

Corporate responsibility policy

[Bank policy](#)

[2016-12-30 00:00:00 | National Australia Bank](#)

[2016-06-15 00:00:00](#)

Group environmental management policy

[Bank policy](#)

[2016-06-15 00:00:00 | National Australia Bank](#)

Related Dodgy Deals

National Australia Bank (NAB) has been linked to the following "Dodgy Deals", e.g. as a current or past financier or through an expression of interest. Find out more about dodgy deals [here](#). See the project or company profile for more details on the nature of the bank's link to the Dodgy Deal.

There are no active project profiles for National Australia Bank (NAB) now.



[Liquified Natural Gas \(LNG\) project](#)

[Papua New Guinea](#)
[Project](#)
[On record](#)
[LNG Terminal](#)

[Liquified Natural Gas \(LNG\) project](#)



[Great Barrier Reef Coal & Gas Exports](#)

[Australia](#)
[Project](#)
[On record](#)
[Coal Mining | Fossil Fuels Bulk Stations and Terminals | Oil and Gas Extraction](#)

[Great Barrier Reef Coal & Gas Exports](#)



[Maules Creek coal mine](#)

[Australia](#)
[Project](#)
[On record](#)
[Coal Mining](#)

[Maules Creek coal mine](#)



[Cerrejón coal mine](#)

[Colombia](#)
[Project](#)
[On record](#)
[Coal Mining](#)

[Cerrejón coal mine](#)

[Colombia](#)



[Woodlark Island Kula Gold Project](#)

[Papua New Guinea](#)

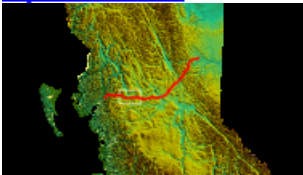
[Project](#)

[On record](#)

[Mining](#)

[Woodlark Island Kula Gold Project](#)

[Papua New Guinea](#)



[Coastal GasLink pipeline](#)

[Canada](#)

[Project](#)

[On record](#)

[Pipeline Transportation of Natural Gas](#)

[Coastal GasLink pipeline](#)

[Canada](#)



[Rio Tinto](#)

[Australia](#)

[Company](#)

[active](#)

[Mining | Nuclear Electric Power Generation](#)

[Rio Tinto](#)

[Australia](#)



[Alamtri Resources Indonesia \(formerly Adaro Energy Indonesia\)](#)

[Indonesia](#)

[Company](#)

[active](#)

[Coal Mining | ...](#)

[Alamtri Resources Indonesia \(formerly Adaro Energy Indonesia\)](#)

[Indonesia](#)



[Glencore](#)

[Switzerland](#)

[Company](#)

[target](#)

[Coal Mining | ...](#)

[Glencore](#)

[Switzerland](#)

There are no active company profiles for National Australia Bank (NAB) now.

Show company files on record



[BHP Billiton](#)

[Australia](#)

[Company](#)

[on record](#)

[Coal Mining | Mining | Oil and Gas Extraction](#)

[BHP Billiton](#)

[Australia](#)



[Wilmar International](#)

[Singapore](#)

[Company](#)

[on record](#)

[Agriculture for Palm Oil](#)

[Wilmar International](#)

[Singapore](#)



[Anglo American](#)

[United Kingdom](#)

[Company](#)

[on record](#)

[Coal Mining | Mining](#)

[Anglo American](#)

[United Kingdom](#)



Whitehaven Coal

[Australia](#)
[Company](#)
[on record](#)
[Coal Mining | ...](#)

Whitehaven Coal

[Australia](#)



OLAM

[Singapore](#)
[Company](#)
[on record](#)
[Commodities Trading](#)

OLAM

[Singapore](#)



Trafigura

[Singapore](#)
[Company](#)
[on record](#)
[Commodities Trading | Oil and Gas Extraction](#)

Trafigura

[Singapore](#)



Vitol

[Switzerland](#)
[Company](#)
[on record](#)
[Commodities Trading | Oil and Gas Extraction](#)

Vitol

[Switzerland](#)

Policy Assessments

An uncaught Exception was encountered

Type: Error

Message: Cannot use object of type stdClass as array

Filename: /home/btwebhost/www/btci3/application/views/sections/shared/tabletools.php

Line Number: 3

Backtrace:

File: /home/btwebhost/www/btci3/application/helpers/easy_helper.php
Line: 366
Function: view

File: /home/btwebhost/www/btci3/application/views/sections/bankprofile/pdf.php
Line: 73
Function: lv

File: /home/btwebhost/www/btci3/application/libraries/sections/Bankprofile.php
Line: 528
Function: view

File: /home/btwebhost/www/btci3/application/controllers/Main.php
Line: 331
Function: content

File: /home/btwebhost/www/btci3/index.php
Line: 321
Function: require_once